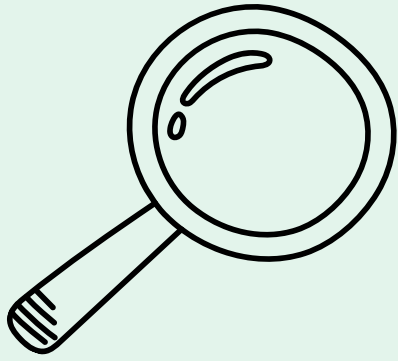


# Cycle of Participation and Engagement

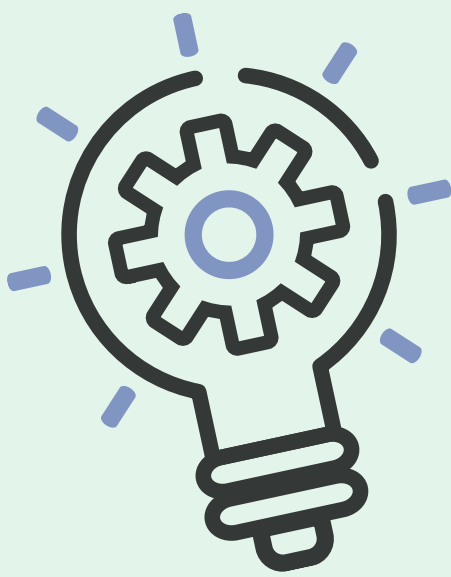
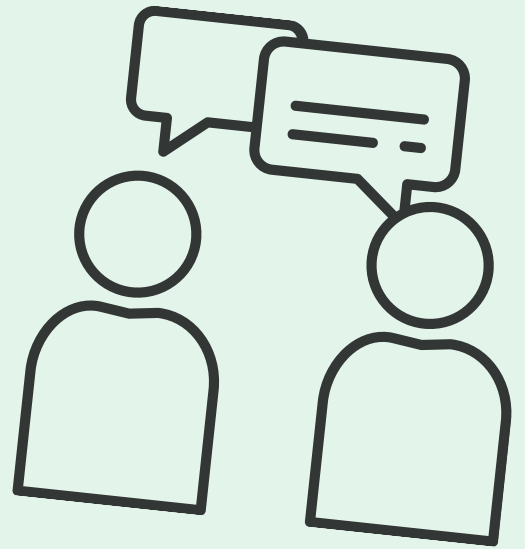


## Quarter 1

Focus of participation agreed, as determined by strategic/operational priorities

## Quarter 2

Period of engagement with children, young people and families. Delivered across appropriate teams and services



## Quarter 3

Collation and processing of information gathered. Consideration of codesign opportunities

## Quarter 4

Period of reporting back to children, young people, families and professionals of the outcomes and decisions made.

